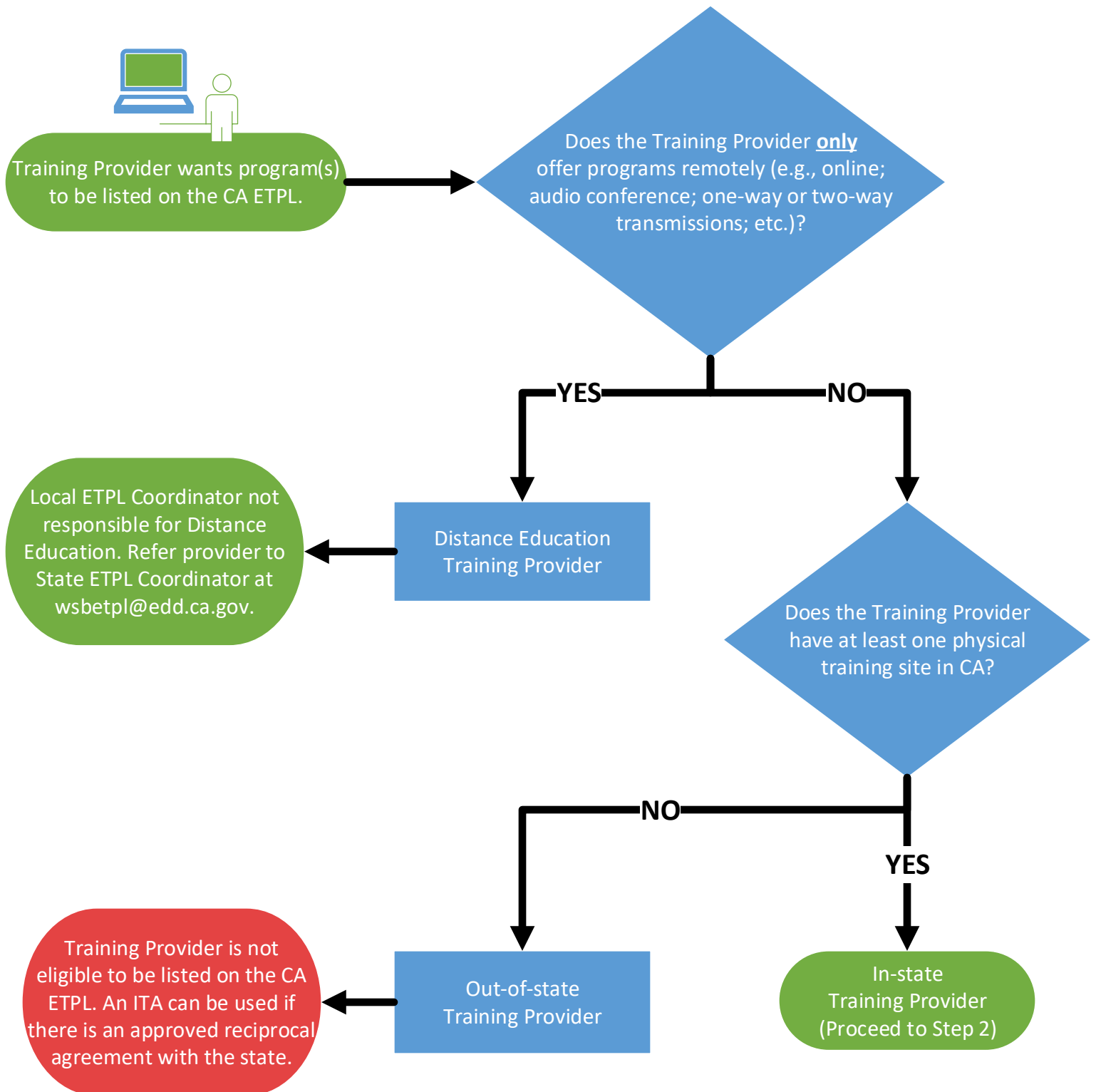


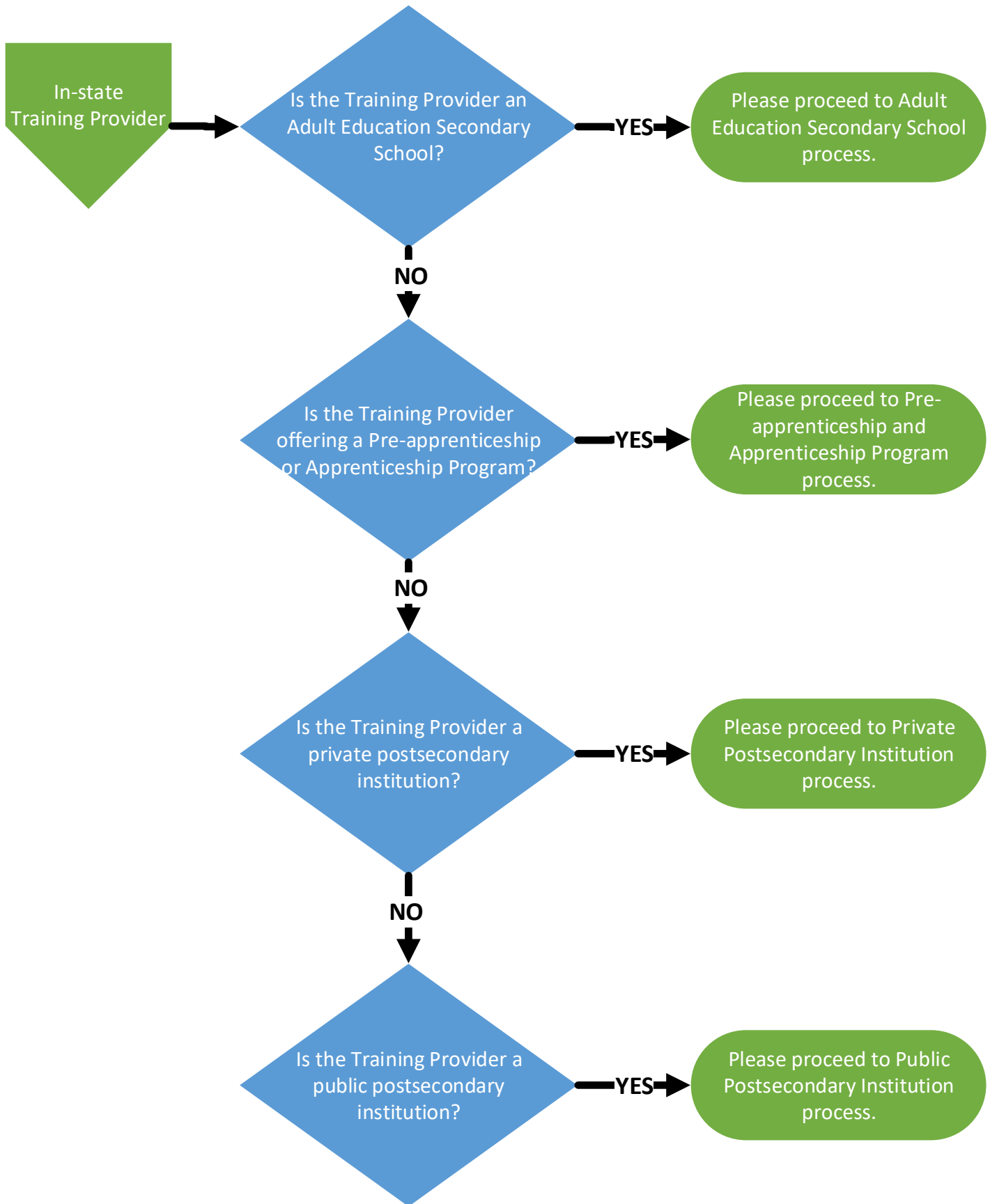
STEP 1: CALIFORNIA ELIGIBLE TRAINING LIST (ETPL) TRAINING PROVIDER CATEGORY DETERMINATION



Once Training Provider Type is determined, proceed to Step 2.

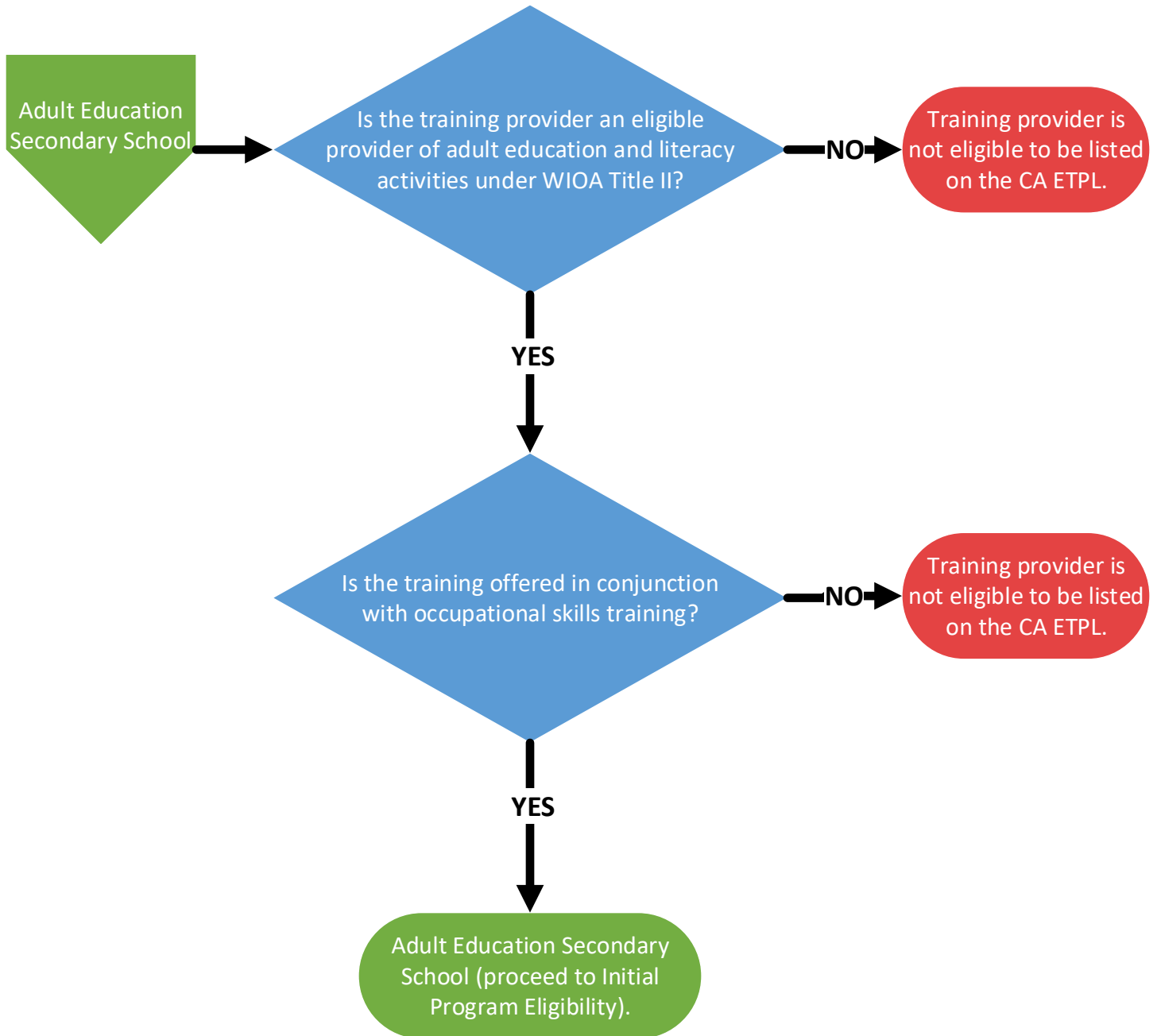
CA ETPL Training Provider and Program Determination Flowchart

STEP 2: CA ETPL TRAINING PROVIDER TYPE DETERMINATION



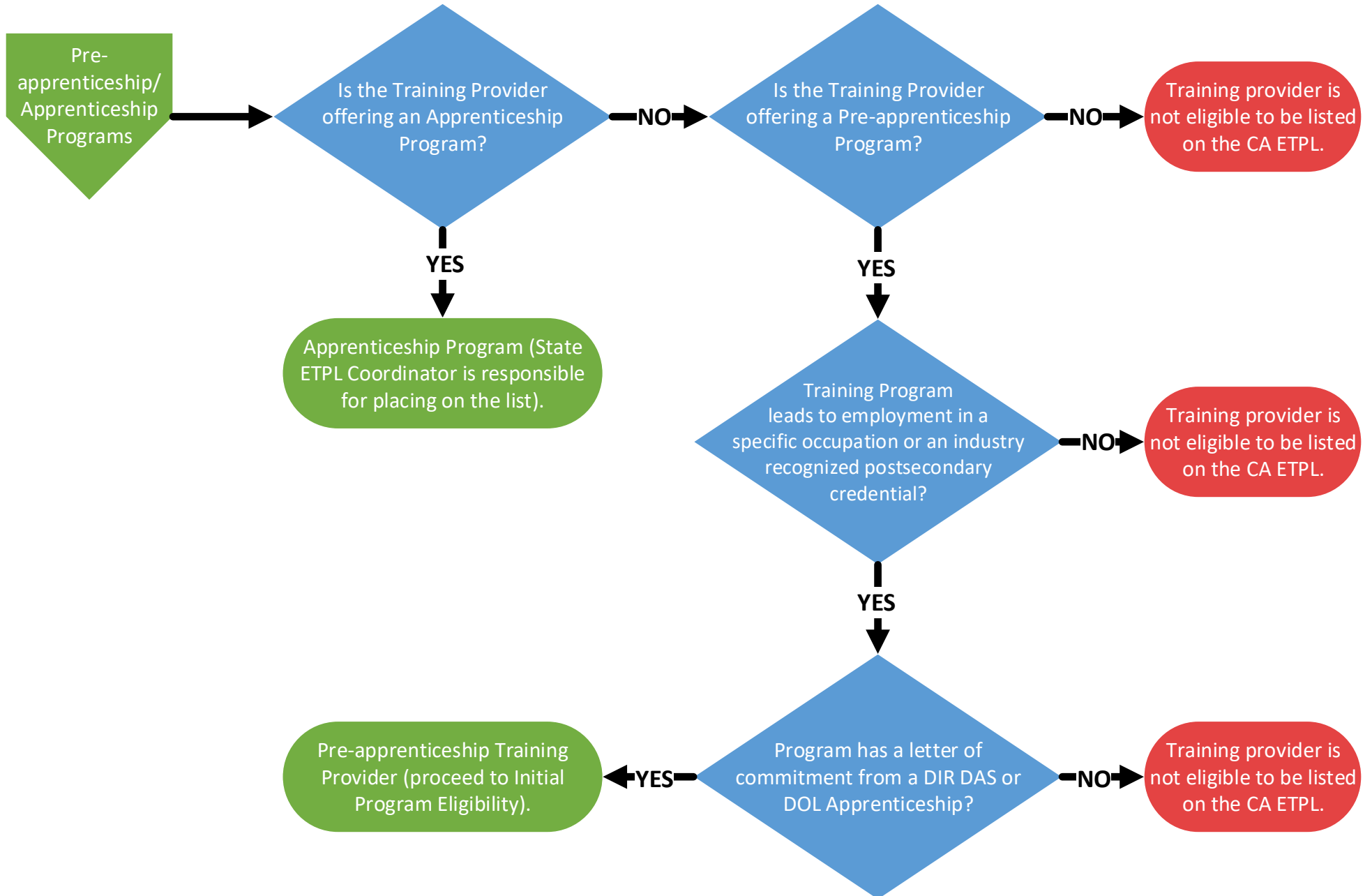
For definitions of the provider types, please reference Attachment 1 and 2 of the Directive.

STEP 3: CA ETPL TRAINING PROVIDER ELIGIBILITY DETERMINATION

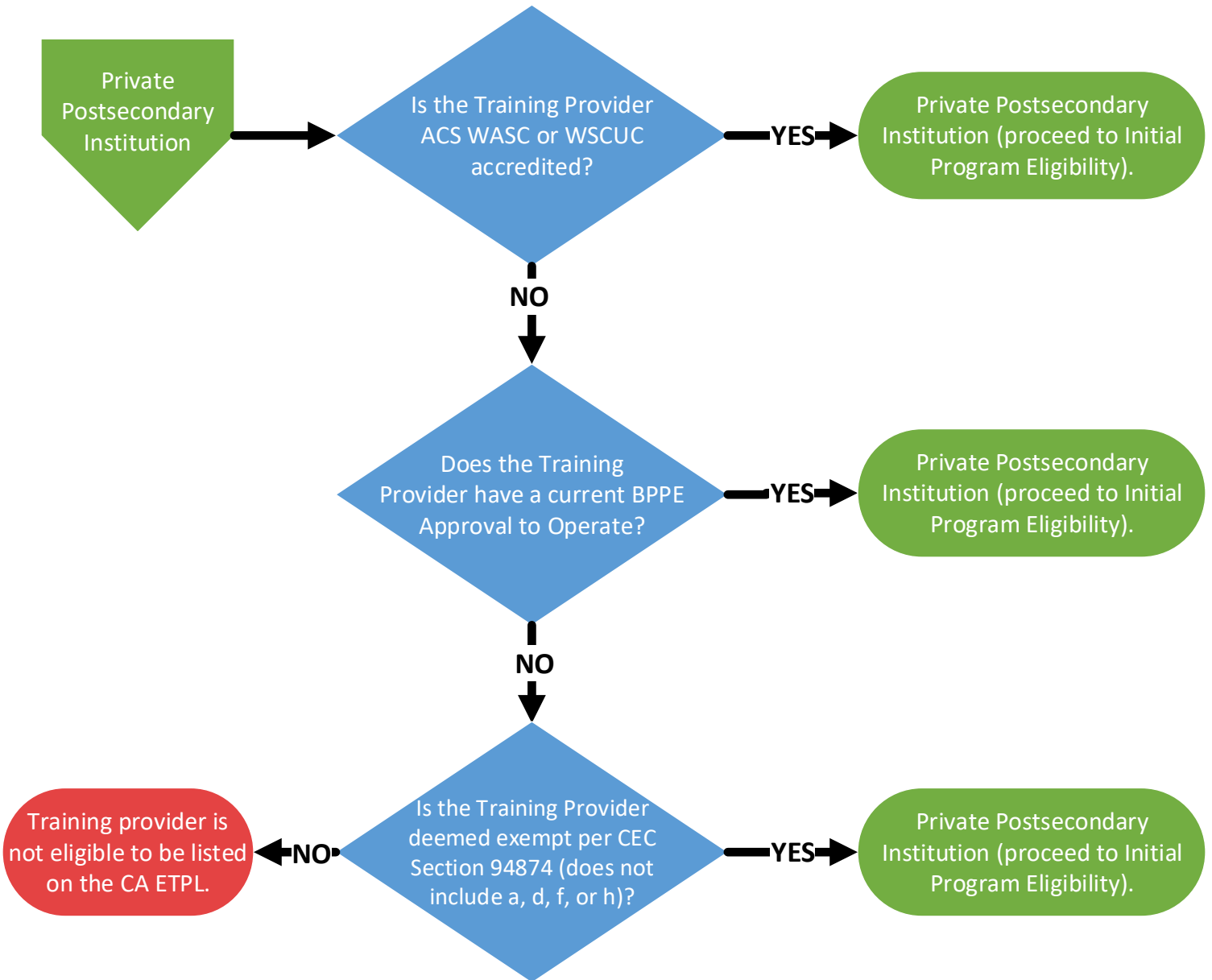


CA ETPL Training Provider and Program Determination Flowchart

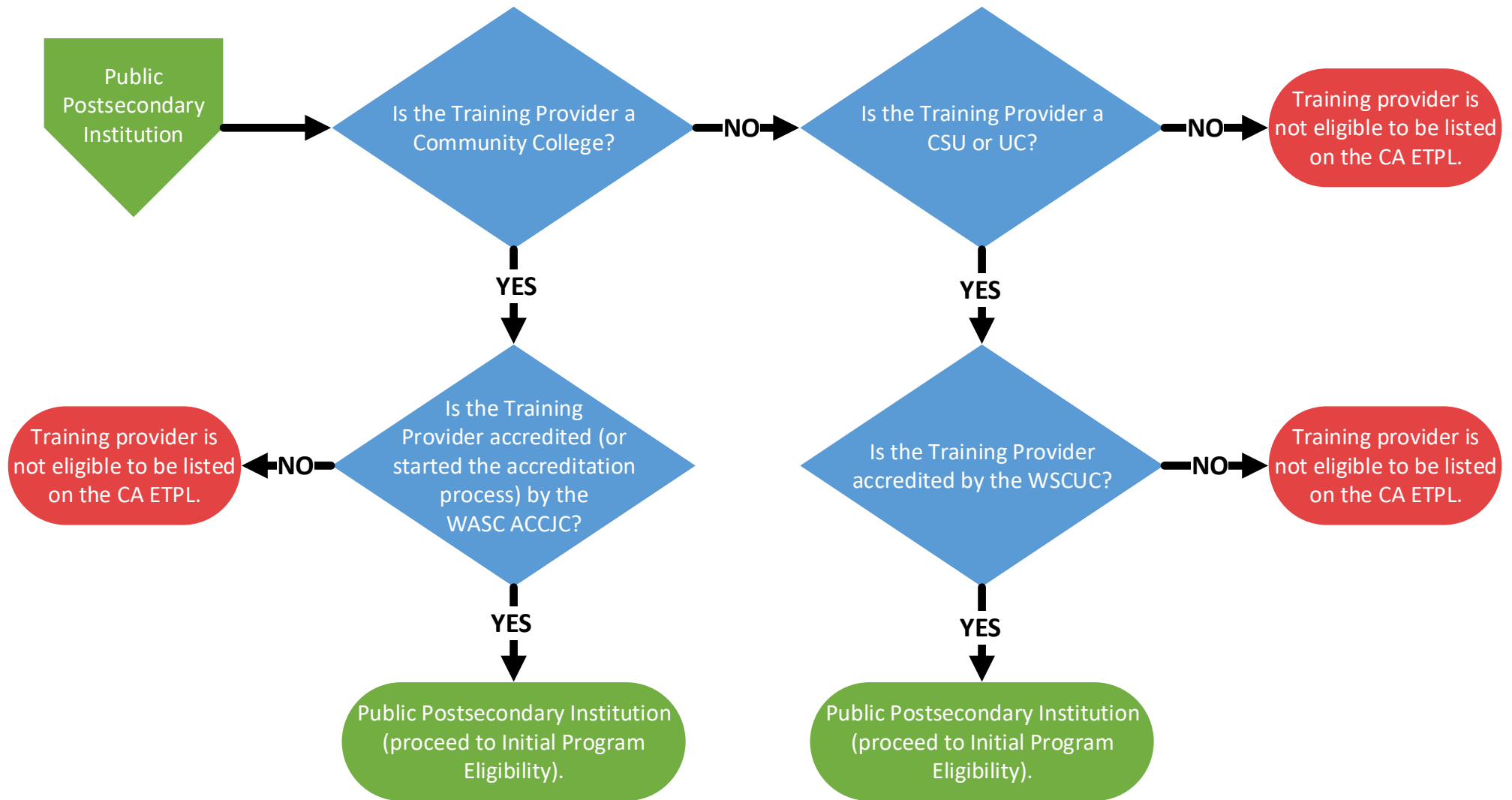
STEP 3: CA ETPL TRAINING PROVIDER ELIGIBILITY DETERMINATION



STEP 3: CA ETPL TRAINING PROVIDER ELIGIBILITY DETERMINATION



STEP 3: CA ETPL TRAINING PROVIDER ELIGIBILITY DETERMINATION

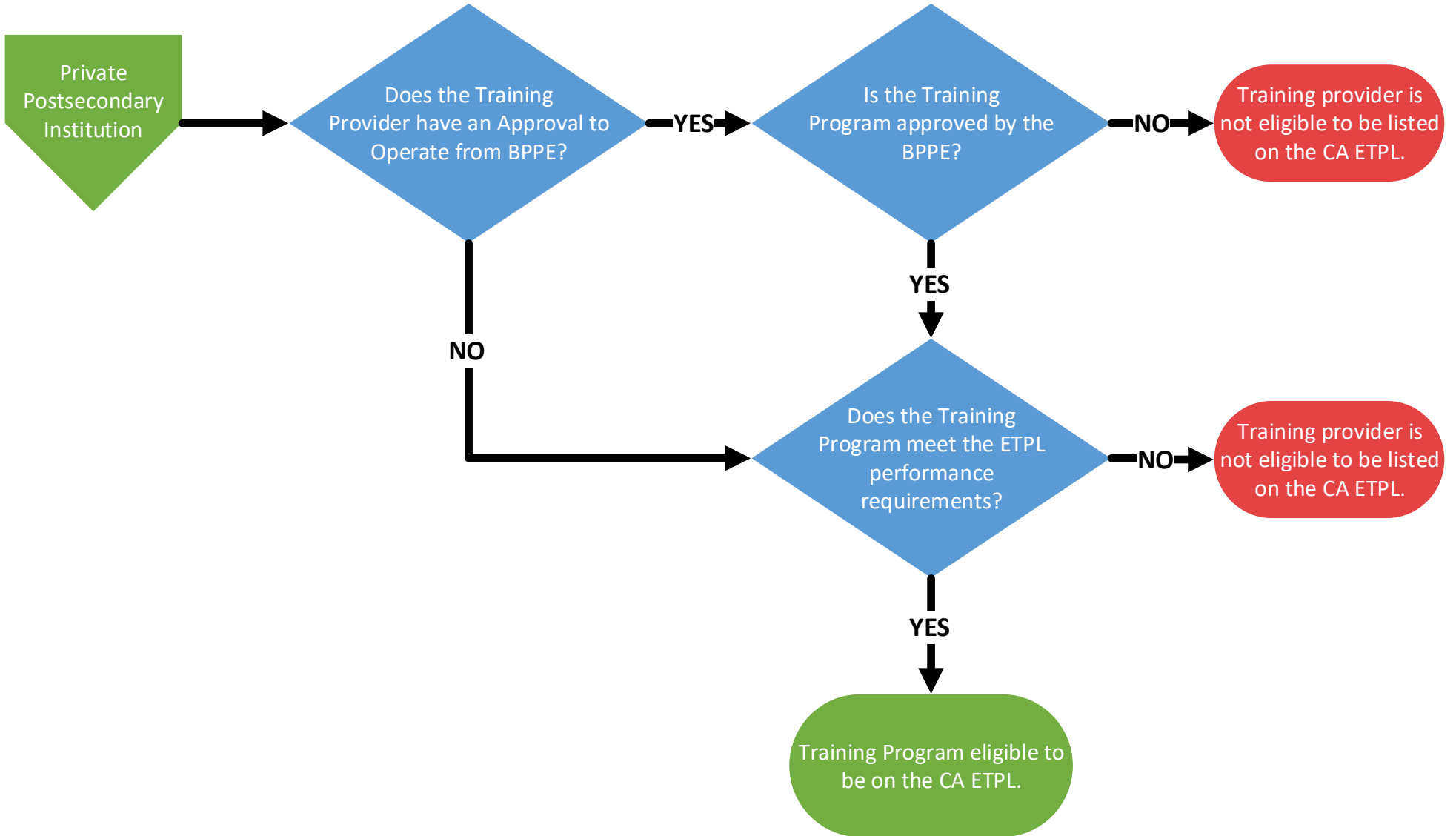


STEP 4: CA ETPL TRAINING PROVIDER TYPE DETERMINATION



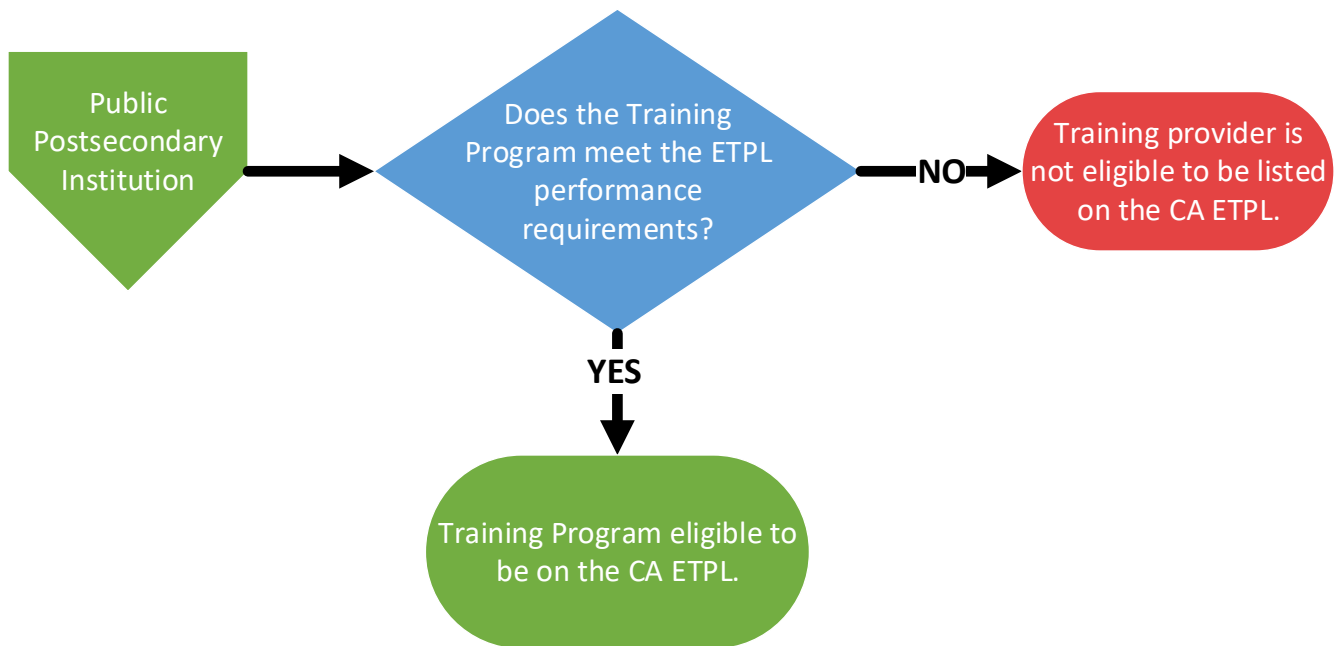
CA ETPL Training Provider and Program Determination Flowchart

STEP 5: CA ETPL TRAINING PROVIDER ELIGIBILITY DETERMINATION





STEP 5: CA ETPL TRAINING PROVIDER ELIGIBILITY DETERMINATION



STEP 5: CA ETPL TRAINING PROVIDER ELIGIBILITY DETERMINATION

