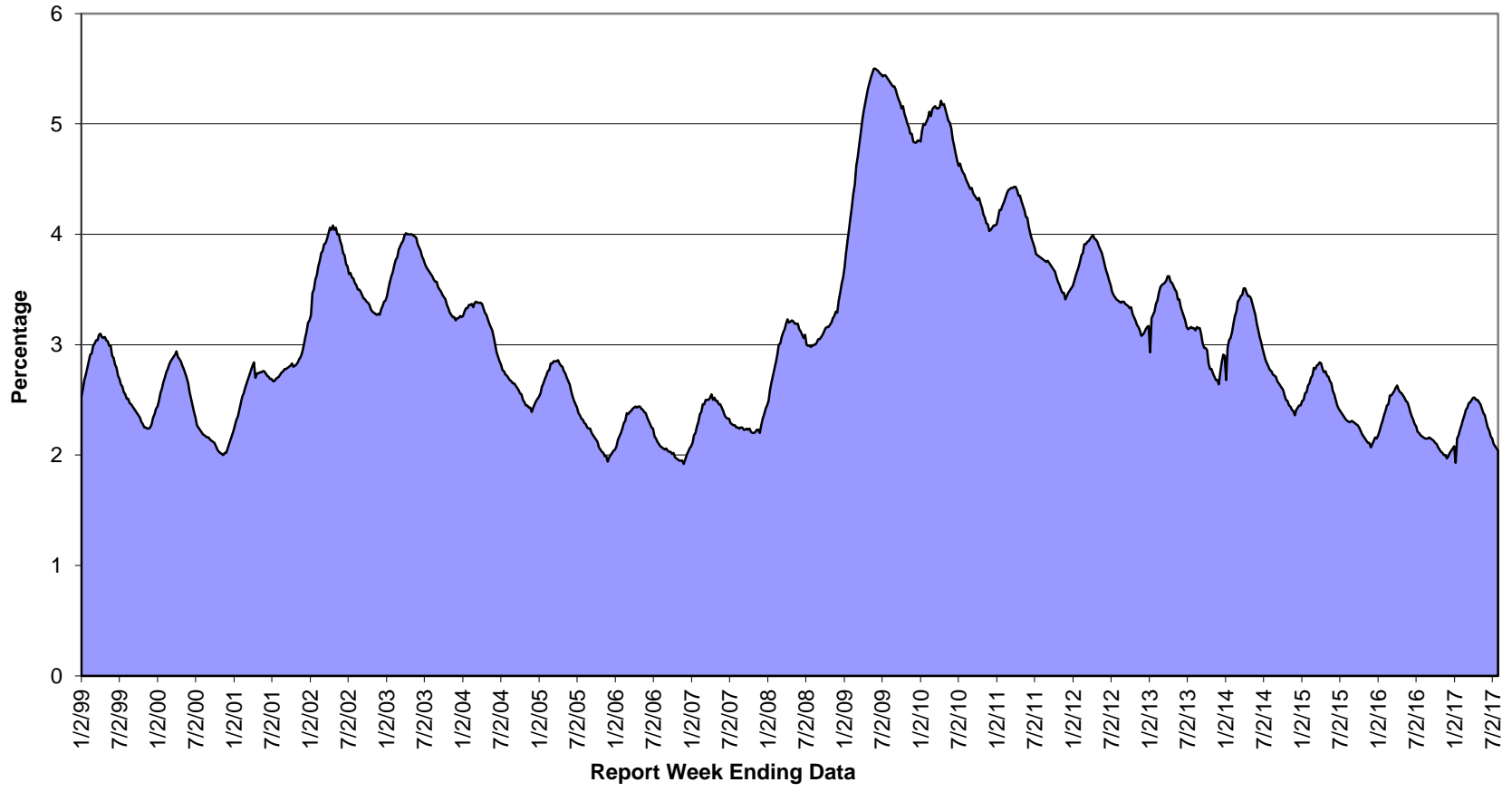




**Unemployment Insurance - Quick Statistics**

**Insured Unemployment Rate-13 Week Average**

The 13-week average is used by the Department of Labor to determine if states will become eligible for specific Federal extensions





Unemployment Insurance - Quick Statistics

Source: ETA 539

Insured Unemployment Rate (IUR) - Based on an Individual Week

Table with 48 columns (IUR, Filed Week) and rows representing weekly data from 1/4/1997 to 12/30/2011. The table shows the insured unemployment rate over time, with values generally fluctuating between 2.5% and 7.5%.

The weekly IUR is based on one week's data only.

*Unemployment Insurance - Quick Statistics*

**Insured Unemployment Rate-Based on an Individual Week**

